



Color



Setty

Sales offer

Color

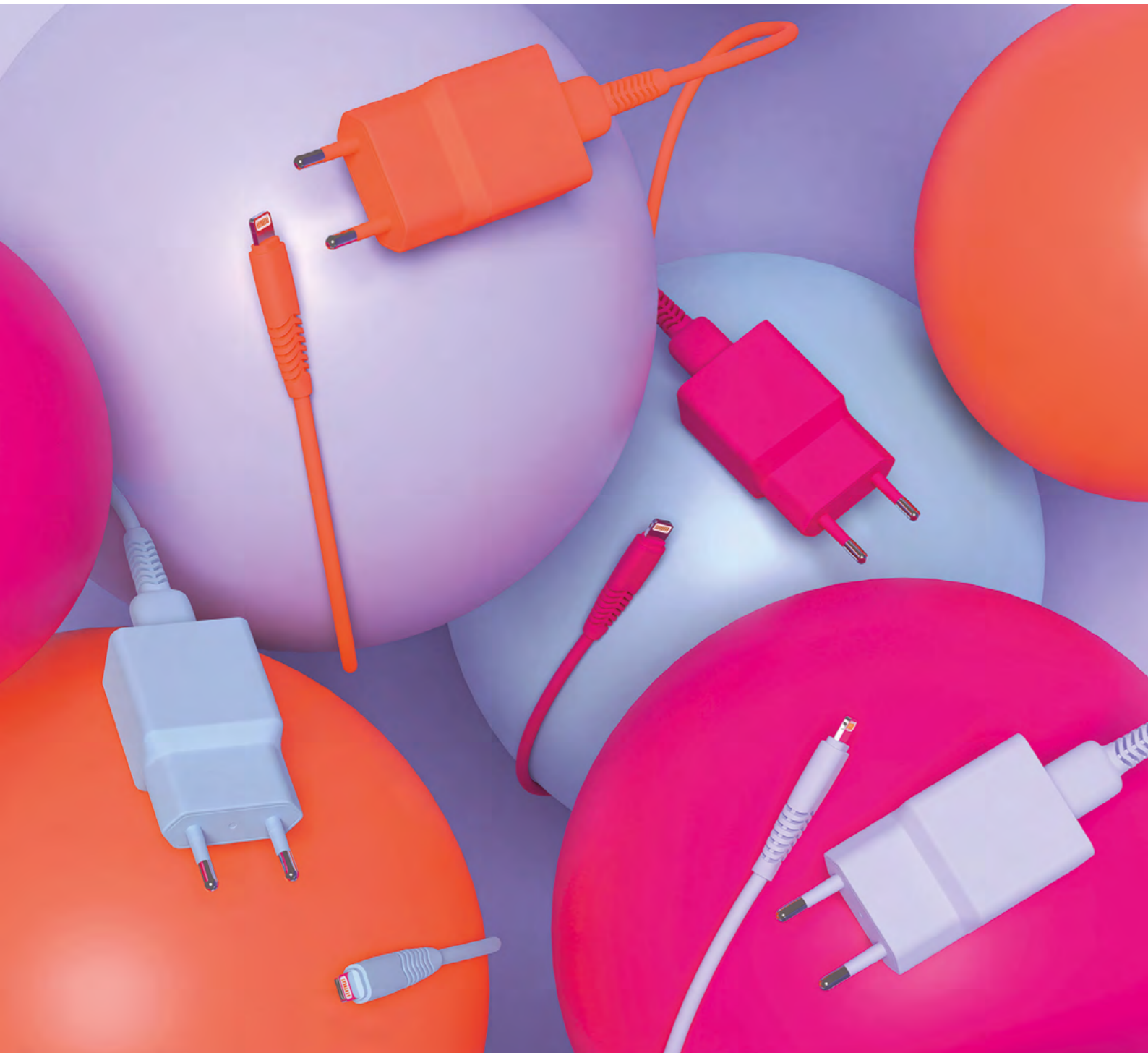
Setty



Setty's "Color" series is distinguished by **fashionable color variants that catch the eye of the spontaneous viewer** and are popular with consumers in food and beauty chains.

Setty

Setty is for those who want more from technology but don't need unnecessary complications, they want to **experience technology that is affordable and effective as one simple smile**. The Setty brand was created in response to the growing demand for **good quality products at attractive prices with wide distribution**.



Setty Color products



Convenience and functionality

The entire range of accessories offered by Setty focuses on functionality, everyday convenience and accessibility.



Modern technology for everyone

Setty offers the opportunity to use modern technology that you can rely on, at affordable prices, in fashionable design and vibrant colors.



Simplicity for modern living

Our products are the foundation for modern, everyday living. Setty is for those who expect more from technology, experiencing it as simply and effectively as one smile.



COLOR

OFFER



Rainbow **Setty**



Cable USB-A to Lightning / USB-A to USB-C 1.2 m 2.1A rainbow

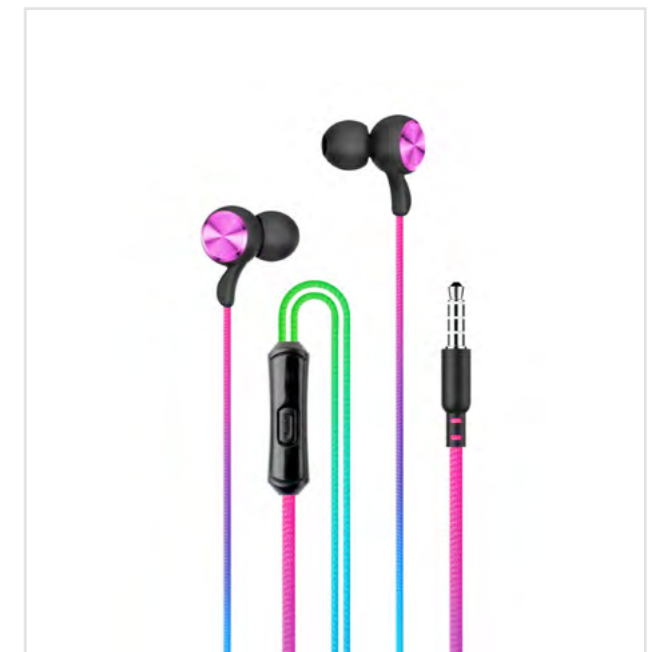
Connectors: USB-A to USB-C / USB-A to Lightning
Maximum current: 2.1 A
Length: 1.2 m
Data transfer: yes
Fabric braid: yes

Code: GSM171576, GSM171575

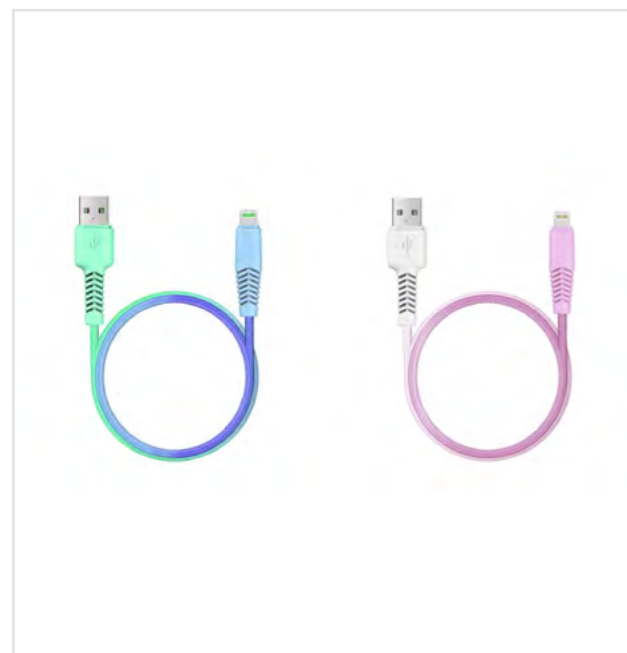
In-ear wired headphones rainbow

Microphone: yes
Type of headphones: wired in-ear
Cable length: 1.20 m
Sensitivity: 100 dB
Connector: audio jack 3.5 mm
Frequency: 20 - 20 000 Hz
Impedance: 16 - 32 Ω
Maximum power: 20 mW
Multifunction button (answer/end call, play/pause): yes

Code: GSM171589



Gradient **Setty**



Cabel USB-C to USB-C / USB-C to Lightning / USB-A to USB-C / USB-A to Lightning

Choice of color: blue-pink, mint-purple, mint-white, white-pink
Length: 1.5 m
Maximum current: 2.4 A

Code: GSM183586, GSM183587, GSM183588, GSM183590, GSM183591, GSM183592, GSM183589, GSM183578, GSM183579, GSM183580, GSM183577, GSM183582, GSM183583, GSM183584, GSM183581

Wall charger 2x USB-A

Output: 2x USB-A
Input voltage: 100 - 240 V ~ 50-60 Hz 0.1 A
Output voltage: 5.0 V $\overline{=}$ max. 2.4 A

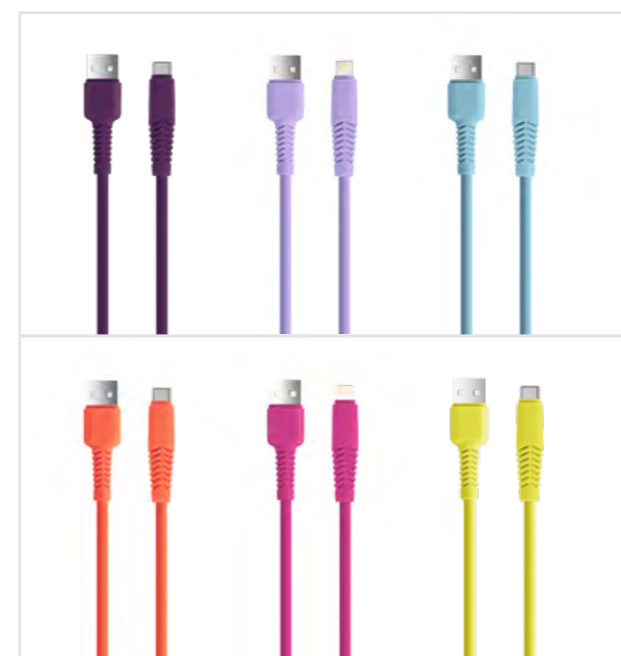


Code: GSM183598, GSM183599, GSM183600, GSM183597





Vibrant **Setty**



Cabel USB-A to USB-C / USB-A to Lightning / USB-C to USB-C

Choice of color: pink, lilac, blue, orange, violet, lime
Maximum current: 2.1 A
Length: 1.2 m
Data transfer: yes
Material: silicone

Code: GSM165719, GSM165721, GSM165720,
GSM165718, GSM169856, GSM165724,
GSM165722, GSM165723, GSM165725,
GSM168167, GSM168168, GSM168170,
GSM168169, GSM169855

Wall charger USB-A 2,4A

Choice of color: pink, lilac, orange, blue
Output: 1x USB-A
Input voltage: 100 - 240 V ~ 50-60 Hz 0.1 A
Output voltage: 5.0 V $\overline{=}$ max. 2.4 A

Code: GSM165727, GSM165726, GSM165729,
GSM165728



Vibrant **Setty**



TWS Bluetooth earphones with charging case

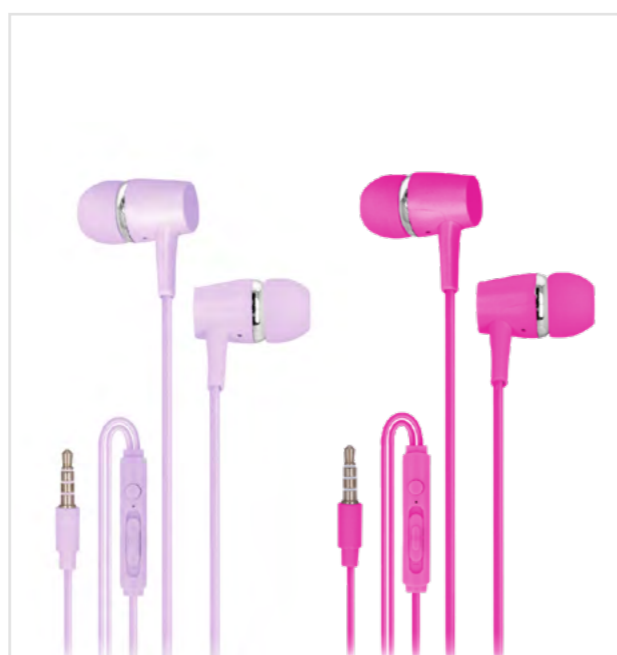
Choice of color: lilac, pink, orange
Bluetooth version: 5.0
Bluetooth range: 10 m
Charging socket: USB-C
Battery capacity (earphones): 30 mAh
Battery capacity (charging case): 300 mAh
Signal-to-noise ratio (SNR): > 42 dB
Frequency: 20Hz - 20kHz
Input voltage: 5V=
Music playback time: up to 4 hours
Microphone: built-in
Touch control: yes

Code: GSM165735, GSM165734, GSM165737

Wired in-ear headphones

Choice of color: pink, lilac
Microphone: yes
Type of headphones: wired in-ear
Cable length: 1,20 m
Sensitivity: 100 dB
Connector: audio jack 3.5 mm
Frequency: 20 - 20 000 Hz
Impedance: 16 - 32 Ω
Maximum power: 20 mW
Multifunction button (answer/end call, play/pause): yes
Volume control: yes

Code: GSM165934, GSM165935





Display

The proposed display of the Setty "Color" line is a compact and striking solution that fits perfectly into small shop spaces. With its compact size, it is designed to make the most of any available space. **The colorful set of cables and chargers is an eye-catcher, encouraging quick and impulse purchases. As a result, customers can easily spot and select the accessories they need, even during a short visit to the shop.**

Display functions and possibilities:

Sales support: the compact design of the display facilitates the management of shop space, allowing more products to be placed in a limited area. Ease of replenishment and reorganisation of the assortment makes it possible for shop staff to take care of the aesthetics and availability of products quickly and efficiently. By making the display highly visible and aesthetically pleasing, retailers can expect to increase customer interest and sales of GSM accessories.

Functionality and accessibility: the bright, vivid colors of the cables and chargers are not only eye-catching, but also make it easier for customers to quickly find the product they are looking for. The convenient positioning of accessories makes it easy to compare the available options and make a quick choice. For those needing to suddenly replenish their electronics stock, the display becomes a convenient destination with GSM accessories. It is a practical and stylish POS solution that enhances the in-store shopping experience.

**On request, we produce displays and displays in customised sizes.*



Thank you

TelForceOne S.A.
Krakowska 119
50-428 Wrocław

P: +48 71 717 70 73
E: info@telforceone.pl
W: www.telforceone.pl